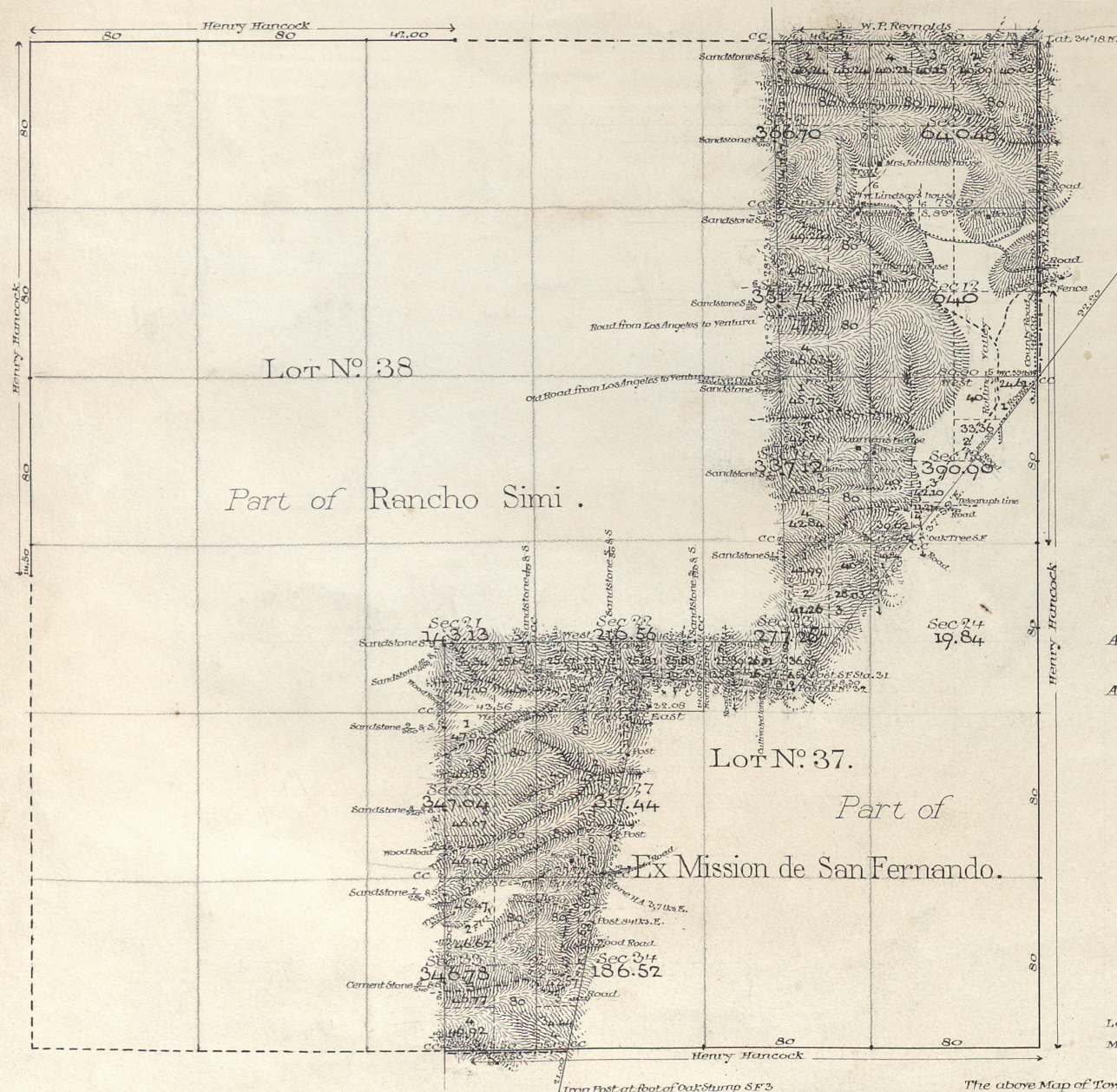


Township N. 2 North Range N. 17 West San Bernardino Meridian California

RECEIVED WITH  
MR. GENL'S LETTER  
JUN 20 1896



Aggregate Area of Public Land	4 581.50 Acres
" " Private Grants	18 458.50 "
Aggregate Area of Township	<u>23 040.00 "</u>

Surveys Designated	By whom surveyed	Contract No.	Date	Amount of Survey	When surveyed
Parts of S. and E. bound <sup>ies</sup> of TP	Henry Hancock	282	December 30 <sup>th</sup> 1853		1854
" " " " " "	"		October 1 <sup>st</sup> 1857		1858
Boundaries of Lot N. 37	Compiled in the Office of the U.S. Surveyor General				
" " " " " "	J. E. Terrell		Inst. Aug. 1 <sup>st</sup> 1860		1861
Parts of N. and E. bound <sup>ies</sup>	W. P. Reynolds		March 18 <sup>th</sup> 1872		1872
Township lines --- new	J. R. Glover	282	November 20 <sup>th</sup> 1884		1885
" " " " " "	"		"		"
Boundaries Lots N. 37 & 38	"		"		"
Section lines	M. E. Reilly	283	"	12 mls 23 chs 5 in	"
Connections	"	"	"	2 " 25 " 9 "	September 27 <sup>th</sup> 1895

The above Map of Township N. 2 North, Range N. 17 West, San Bernardino Meridian, California is strictly conformable to the field notes of the Survey thereof, on file in this Office, which have been examined and approved. See Office letter of even date.  
U. S. Surveyor General's Office  
San Francisco California  
June 20<sup>th</sup> 1896

W. S. Jean

U. S. Surv. Gen. Cal.

Pasted Sept 18, 1896  
W. S. Jean